

EQUIPMENT DATA SHEET - TAILING FRAMES - 150t

ALE use tailing frames to assist in the uprighting of the long vessels or modules from the horizontal to the vertical.

Tailing frames offer an alternative to a crane for the tail lift where crane availability, access restriction or ground loadings are an issue.

The upper frame is fixed to the base of the vessel and located initially in the primary pivot point on the lower frame. As the centre of gravity position approaches the primary pivot point, a suitable secondary pivot point is utilised to complete the uprighting operation.

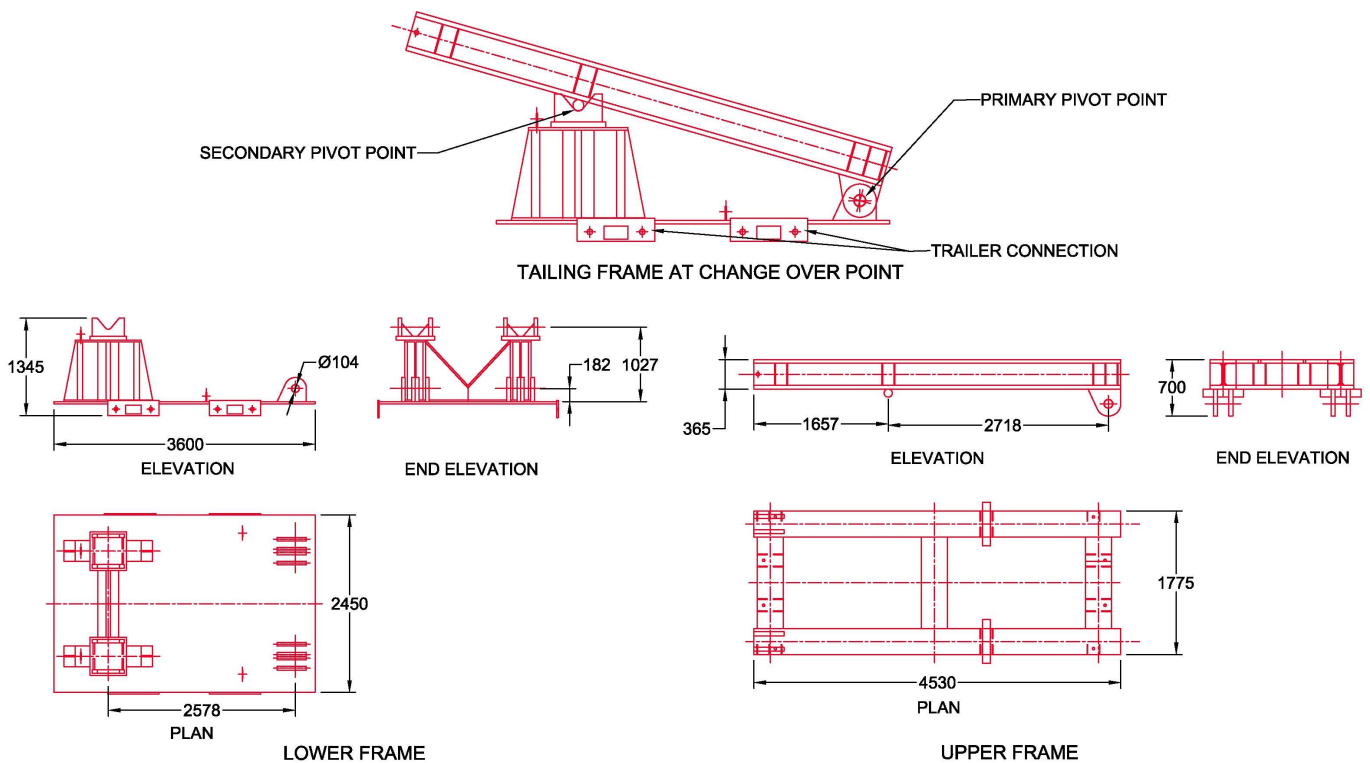
ALE have a range of tailing frames to suit various vessels weights, ring diameters and centre of gravity positions.



150t TAILING FRAME

Capacity: 150 tonnes

Weight: 8.4 tonnes



For reference only

